



GO BIG. GO EVERETT.

Port Leadership



DAVID SIMPSON
Port Commissioner
District 1



TOM STIGER
Port Commissioner
District 2



GLEN BACHMAN
Port Commissioner
District 3



LISA LEFEBBER
Chief Executive Officer

Our Team



CARL WOLLEBEK
CHIEF OF OPERATIONS

Senior executive in charge of terminal operations, security and business development. Carl has been with the Port since 1998, and has more than 30 years in the shipping industry.

425.388.0622
carlw@portofeverett.com



WALTER SEIDL
MARINE TERMINALS DIRECTOR

In charge of ensuring the day-to-day operations run smoothly and efficiently for our valued customers. Walter has been with the Port since 2013, and has 35 years in the shipping industry.

425.388.0626
walters@portofeverett.com



CARA CRAIG
DIRECTOR OF TRADE DEVELOPMENT

Responsible for customer relationships, business development and diversification. Cara has 25+ years in the transportation and supply chain industry.

425.388.0633
carac@portofeverett.com



ED MADURA
SECURITY DIRECTOR

In charge of ensuring the safety and security of our terminal operations and cargo movements. Ed has been with the Port since 2007, and has 37 years in the maritime industry.

425.259.5428
edm@portofeverett.com



PAUL HAGGLUND
CUSTOMER SERVICE MANAGER

Responsible for cargo logistics and customer satisfaction. Paul has been with the Port since 2007.

425.258.8102
paulh@portofeverett.com



GA WON KIM
DOCK SUPERINTENDENT

Responsible for coordinating vessel and freight movements into and throughout the seaport.

425.388.0711
gawonk@portofeverett.com



SCOTT SULLIVAN
OPERATIONS REPRESENTATIVE

Assists with customer service to ensure quick and efficient cargo movements.

425.388.0707
scotts@portofeverett.com

Visit us on the online @
portofeverett.com/seaport

Our Promise

“We are **dedicated** to providing safe, exceptional service and quick turnaround times **for our customers.**”



Norton Terminal
40-acre paved, lit and secure cargo yard

Everett Ship Repair

Pier 3
-40' MLLW
650' berth

Hewitt Wharf
-25' MLLW
815' berth

Pier 1
-40' MLLW
600' berth

Pacific Terminal
-40' MLLW
650' berth

South Terminal
-40' MLLW
700' berth | 900' ro/ro berth

BNSF Mainline



Specializing in Overdimensional High Value Cargoes

- Natural deep-water port strategically located on the Pacific Northwest Coast of America
- Specialize in handling overdimensional, high value cargoes
- Premiere breakbulk port in the region; Third largest container port in Washington state
- Shipping facilities closer than any other U.S. port to the Far East, Alaska and Canada
- Located on the BNSF mainline; the first port reached by westbound BNSF trains
- BNSF Railway serves Canada, the Midwest and Eastern United States
- Designated MARAD Strategic Commercial Seaport
- Quick turn-around times and lack of seaport congestion
- Excellent on-dock rail, with 12,500 lineal feet of rail spanning the terminals
- Customer-focused management staff
- Highly-skilled ILWU workforce with vast experience handling diverse cargo types
- Competitive Foreign Trade Zone #85
- 24/7 security with fencing, cameras and lighting
- Close proximity to U.S. I-5 and I-90, the major arterials serving the West Coast and Midwest
- Established oversized heavy haul routes
- Four miles from Paine Field airport with jumbo aircraft cargo capabilities serving the local aerospace industry
- Environmental leaders and member of Green Marine

Our Facilities

12,500 LF

SHIPSIDE RAIL & TRACKAGE

185 MT

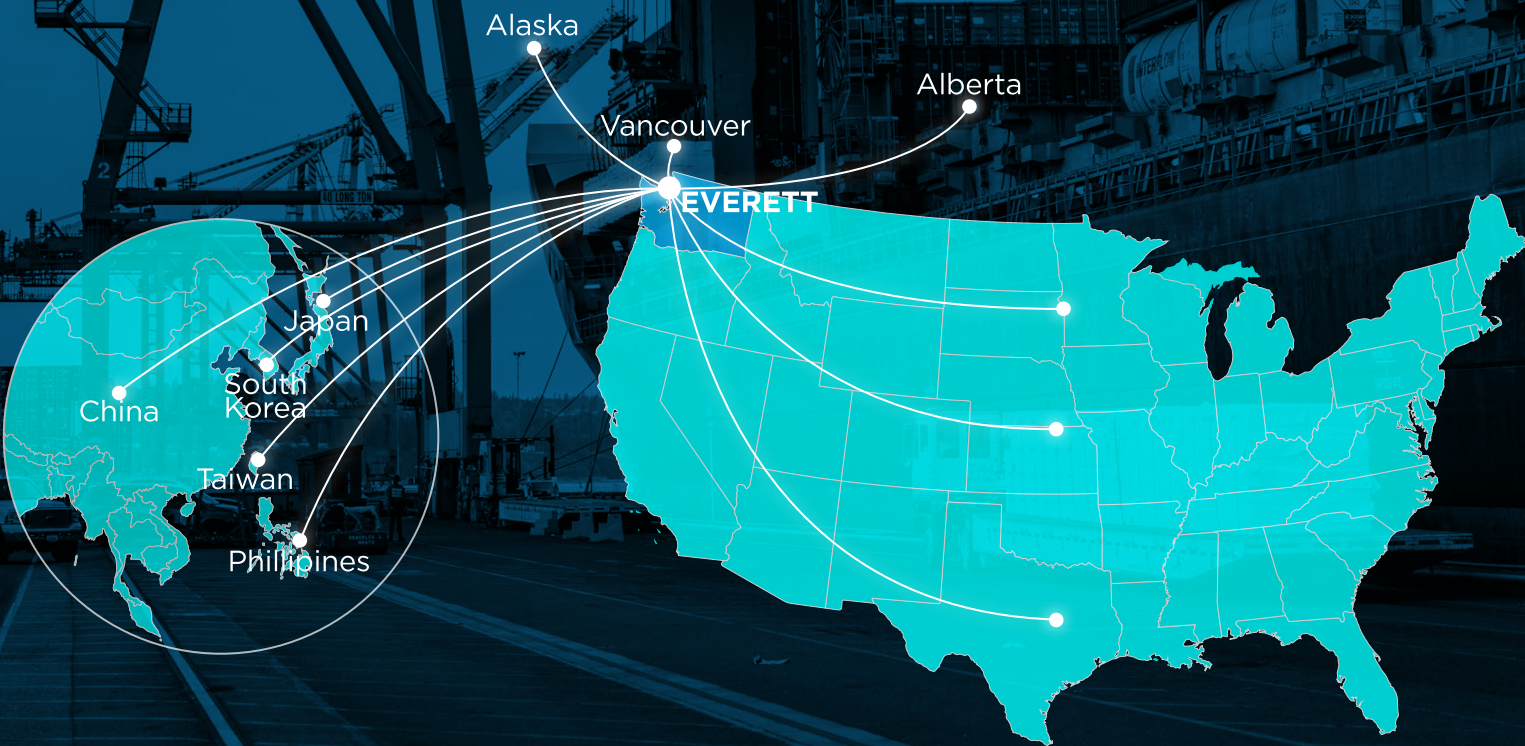
TANDEM LIFT CAPACITY

40+

MLLW DEPTHS

8

SHIPPING BERTHS





Excellent sea, rail & road connections

Direct Rail Connections

The Port of Everett Seaport is the first port reached by westbound BNSF Railway trains. We are your gateway to the midwest, offering direct, seamless connection from the BNSF mainline to our facilities. Our shipside rail includes 12,500 lineal feet of terminal tackage, and on-dock capacity to handle 106 railcars.



Your gateway to arctic, Canadian & midwest markets

✓ Closer

The Port of Everett's natural deep-water seaport is located 25 miles north of Seattle, offering the closest shipping facilities between the Far East, Alaska and the Midwest, and is in close proximity to Western Canada.

✓ Connected

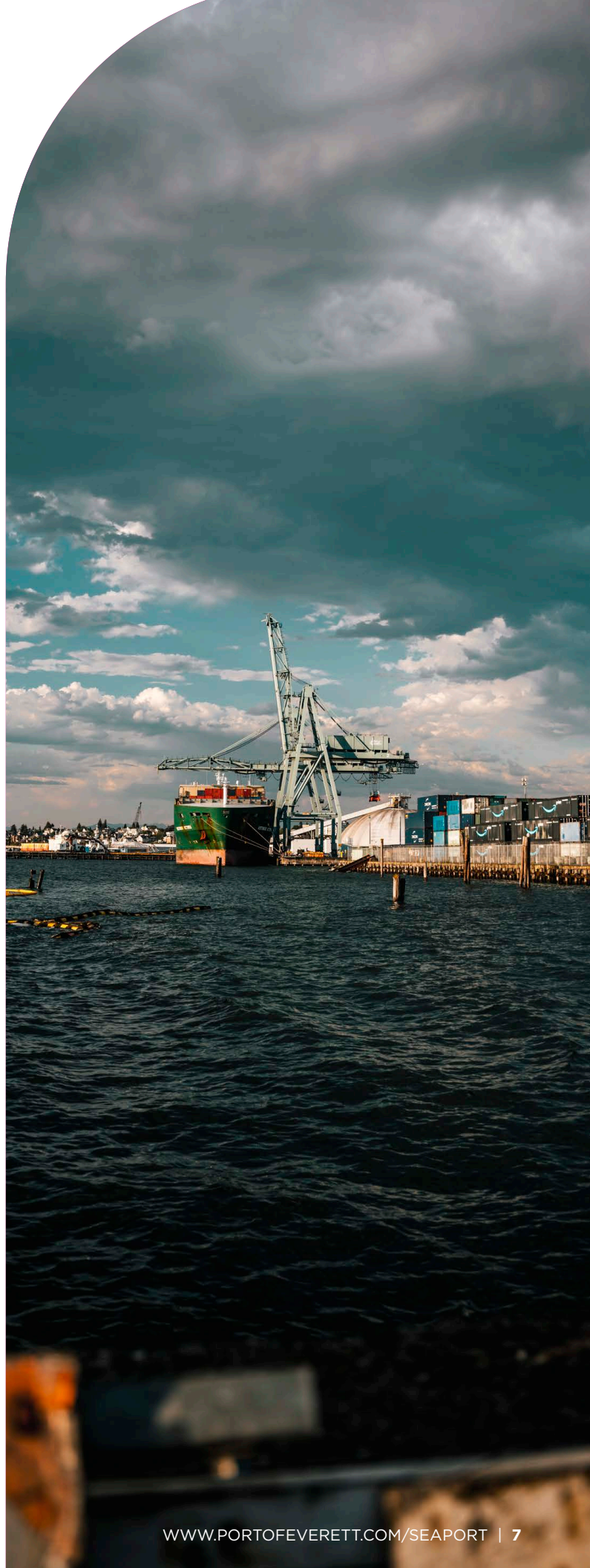
Our sea, short sea, rail and heavy haul road connections meet your cargo needs with efficiency. Our facilities offer a direct connection between the Pacific Rim, Western Canada, the Midwest and the Northwest region via BNSF Railway's mainline, tug and barge, and direct road connections via Interstates 5, 2, 90 and 84.

✓ Convenient

With our established local logistics partners and lack of seaport congestion, the Port of Everett is your number one choice for quick-turnaround.

✓ Committed

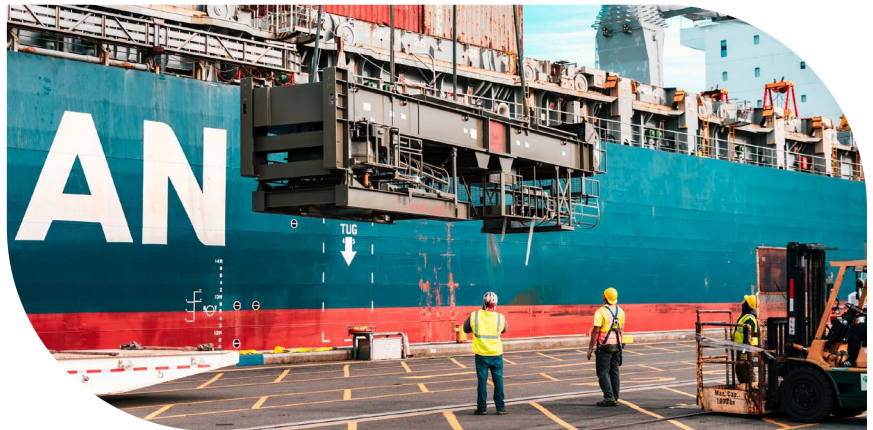
The Port of Everett is committed to providing superior customer service and handling your cargo with care. We ensure safety and security as your cargo moves through our facilities.



Supporting Everett's #1 export customs district with \$21 billion in trade

Major Imports

- Aerospace parts
- Energy supplies
- Heavy machinery
- Cement
- Containers
- Auto parts



Major Exports

- Energy supplies
- Containers
- Heavy machinery
- Pulp
- Forest products



Key Industries

- Aerospace
- Energy
- Military
- Manufacturing
- Construction
- Forest products
- Agriculture





Facilities & Equipment ready to serve your shipping needs

We Offer:

- Five shipping terminals comprised of eight berths
- Two, 40 long-ton rail-mounted Hitachi container cranes
- Two, 50 long-ton rail-mounted Mitsubishi container cranes; 53' container capacity
- Heavylifts with 100-ton and 150-ton mobile harbor cranes; 185-ton tandem lift capacity; 53' container capacity
- Six reachstackers with 45-ton lift capacity
- 12,500 lineal feet of shipside rail and terminal trackage; direct access to BNSF Railway's mainline to the Midwest
- Agriculture bulk transfer facility
- 110-ton rail loading ramp
- Upgraded Ro/Ro, container, and general cargo berths
- Forklifts, mafis and other yard equipment
- Yard railcar pusher
- 55,000-ton capacity bulk storage facility
- 58,000 square feet of covered storage
- 75 acres of uncovered storage + 40 acres of expansion
- One, 50-ton rail-mounted straddle gantry crane at Mount Baker Terminal
- On-site tug service
- On-site commercial and government approved shipyard
- On-site equipment cleaning

Specializing in breakbulk & project cargoes

The Port of Everett Seaport is your West Coast choice for transporting overdimensional, high and heavy cargoes. We specialize in handling various breakbulk and project cargoes for the energy, manufacturing, construction, agriculture, and military industries. Our facilities offer the equipment, space and skill to handle your biggest cargo projects quickly and safely.

We offer:

- Heavy lifts using 100-ton and 150-ton mobile harbor cranes; 185-ton tandem lift capacity
- Six reachstackers with 45-ton capacity
- Established freight route with excellent oversized clearances
- 115 acres of uncovered storage
- 1,000 psf load bearing capacity docks
- On-dock equipment cleaning



Oil & Gas



Ro/Ro



Heavy Equipment



Wind Energy



Project Cargo



Energy

Aerospace: A reliable, just-in-time manufacturing extension

Among Washington State's top imports and exports are airplanes and aerospace parts. In 2014, Washington State exported \$25.7 billion worth of aircraft and related products in Everett's custom's district. The Port of Everett is an essential element of this supply chain, as its seaport transports 100 percent of the oversized aerospace parts for the 747, 767 777 and 777X airplanes, and serves as a backup for the 787 Dreamliner.



WHY EVERETT?

- ✓ Third largest container port in Washington state
- ✓ 24-hour deep-water access; natural deep-water port
- ✓ Specialized satellite facility to transport oversized aerospace parts to Paine Field
- ✓ Located on BNSF Railway's mainline; ample on-dock rail
- ✓ Established and reliable logistics chain
- ✓ Highly-skilled workforce with an excellent track record of handling delicate, high-value cargoes
- ✓ Enhancing facilities to meet aerospace shipping needs
- ✓ State-of-the-art cargo handling equipment
- ✓ Quick turn-around times and lack of seaport congestion
- ✓ Dedicated to environmental stewardship



53' Containers:

In April 2021, the Port installed two Post Panamax 50LT gantry cranes onto our upgraded South Terminal. The 60' of space between the legs of the cranes, in addition to acquiring three Wide Twistlock Position (WTP) spreaders, allowed the Port to begin handling 53' intermodal containers. The Port has since purchased an additional reachstacker with WTP capability and have access to two more WTP spreaders giving us six spreader bars capable of handling 53' containers. We have invested in additional yard trailers and a WTP capable top pick to more efficiently handle the 53' containers

Cement: Supporting the construction industry

The Port of Everett has a long-term lease with Lehigh Northwest Cement Company to use the Port's 55,000 ton bulk storage facility to handle cement. Lehigh Northwest Cement Company and its associated companies produce cement, concrete and construction materials.

Lehigh's sister company, Cadman, has a long presence in Snohomish and King Counties. Lehigh has four distribution centers in Washington — Bellingham, Seattle, Spokane and Pasco. These distribution centers are serviced by the Lehigh Everett Terminal.



Military: Strategic Seaport

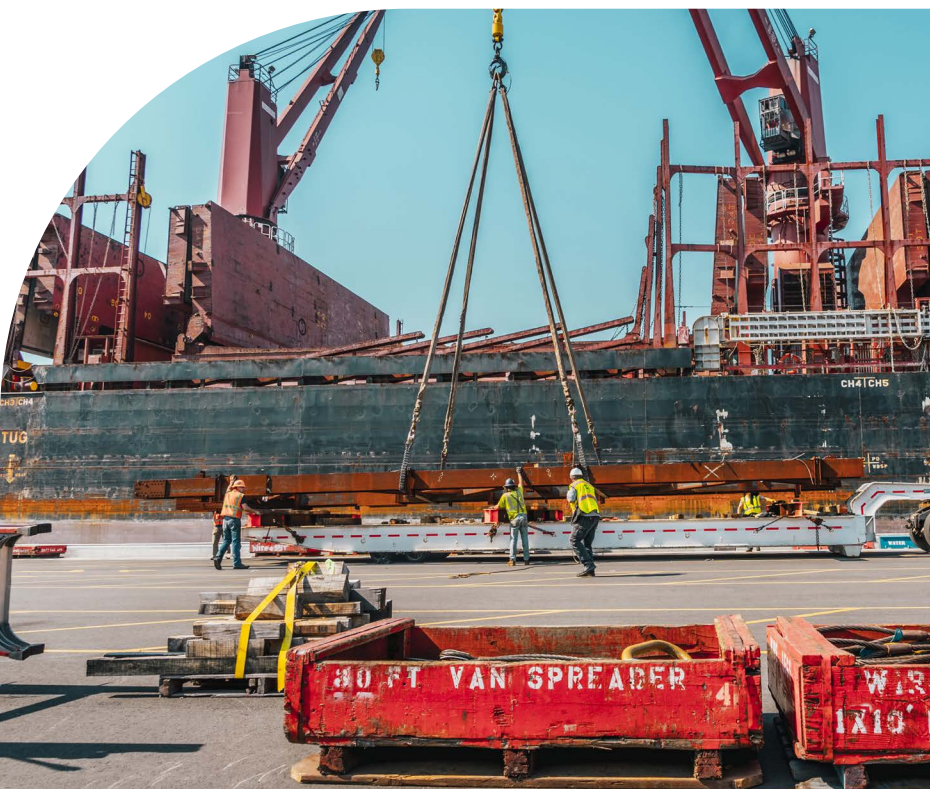
In 2021, the Port of Everett earned designation as a U.S. Department of Transportation Maritime Administration (MARAD) Strategic Commercial Seaport by the Commander, Military Surface Deployment and Distribution Command (SDDC). The new title makes Everett one of only 18 Strategic Commercial Seaports nationwide — five of which are positioned along the West Coast.

Strategic Seaports support the deployment of U.S. Armed Forces in times of war, contingency, national emergency and disaster. With this designation, the Port must maintain readiness and be prepared to meet the military's needs with short notice, while minimizing disruption to commercial services and commerce.



We offer

- Five shipping terminals with eight berths
- Two, 40LT rail-mounted Hitachi container cranes; Two 50LT rail-mounted Mitsubishi container cranes with 53' capacity
- Heavylifts with 100-ton and 150-ton mobile harbor cranes; 185-ton tandem lift capacity; 53' container capacity
- Six reachstackers with 45-ton lift capacity
- 12,500 LF terminal trackage with direct access to BNSF mainline to the Midwest
- 110-ton rail loading ramp and yard railcar pusher
- Forklifts, mafis and other yard equipment
- 58,000 sq. ft. covered storage
- 115 acres uncovered storage
- On-site tug and shipyard services
- On-site equipment cleaning



Skilled Laborforce

The Port of Everett is dedicated to providing exceptional service and quick turnaround times for our customers. We are able to meet this promise through the hardwork and dedication of our management staff and the local ILWU.

Two well-known stevedoring companies, Jones Stevedoring and Stevedoring Services of America (SSA), serve the Port of Everett regularly.

Tug & Barge & Ship Repair Service

The Port of Everett is home to Brusco Tug & Barge Inc, Dunlap Towing and Everett Ship Repair.

BRUSCO TUG & BARGE Inc

Offering contractors and builders a complete range of services including the moving of prefabricated components, raw materials, aggregates, jetty rock and construction equipment. Their diverse fleet includes barges that meet ocean or inland requirements and range in size from four hundred feet in length to small flat deck and dump scows. Their vessels range from 4,500 horsepower ocean vessels to small conventional harbor tugs and pusher tugs with high pilothouses.

DUNLAP TOWING COMPANY

For over 90 years, Dunlap has been providing dependable marine transportation services. With highly skilled crews and fleet of tugs and barges, Dunlap offers towing and assist services throughout the Puget Sound, along the Pacific Coast into Canada, to Alaska including remote ports above the Arctic Circle, and across the Pacific Ocean to Hawaii and beyond.

Whether shipping supplies to Asia, moving a large catamaran down the coast, or towing logs through the sound, Dunlap has the equipment and experience to safely and efficiently transport your cargo.

EVERETT SHIP REPAIR

The Port of Everett Seaport is home to an on-site commercial and government approved shipyard — Everett Ship Repair (ESR). ESR, a subsidiary of Ice Cap Holding, LLC and sister company to Nichols Brothers Boat Builders, leases the north side of the Port's Pier 3 and adjacent 3.5-acre upland site. They operate one of the four largest submersible drydocks in the Pacific Northwest, the Faithful Servant, capable of docking vessels up to 430' x 110' with a lifting capacity of 7,800 long-ton, and have recently expanded their operational capacity, adding a second dry dock, the Emerald Lifter, offering another 2,000 tons of lift capacity with a 220-foot-by-62-foot work deck area. A 150-ton link belt crane is positioned on a nearby barge to support both dry docks. ESR also offers vast ship repair capabilities with 500' of dockside moorage for pier-side vessel service, as well as laydown and fabrication areas.



Modernizing our facilities

Investing in our Future

Over the past decade, the Port has invested more than \$150 million to modernize its Seaport facilities and expand capabilities in response to 21st Century market demand and customer needs. This effort includes upgrading docks, adding on terminal rail capacity, procuring additional cargo handling equipment, and implementing sustainability features to help “green” the supply chain.

In 2021, the Port opened its modernized South Terminal. The \$57 million upgrade added another full-service berth in Everett with two Post-Panamax container cranes to support larger ships and heavier cargo.

NOW OPEN! 40 ACRE NORTON TERMINAL

In addition to maintaining and upgrading existing facilities, the Port is investing in the development of new maritime facilities. Everett’s new 40-acre Norton Terminal is now open for business and accepting containerized and project cargo. The \$40 million investment represents the first all new cargo terminal to open on the U.S. West Coast in more than a decade adding critical capacity to the global supply chain and allowing Everett to further support all of your cargo handling needs.

We offer

- 40-acre paved, lit and secure cargo yard
- Potential for adaptive reuse of an existing 396,000 square foot warehouse
- Infrastructure to support short-sea shipping
- Washdown area



